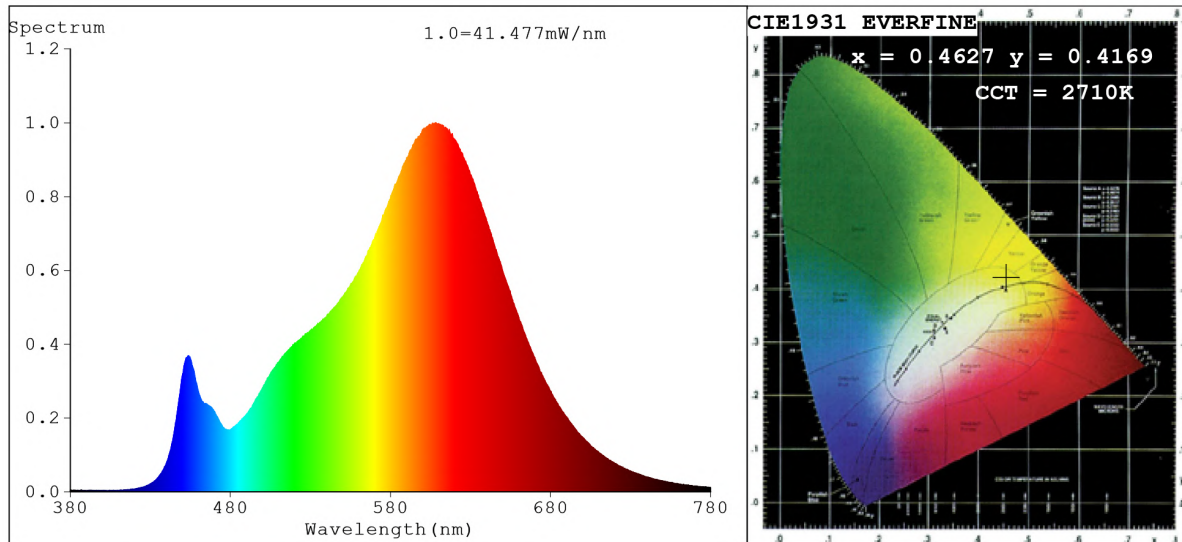


Spectrum Test Report



Color Parameters:

Chromaticity Coordinate: $x=0.4627$ $y=0.4169$ / $u'=0.2615$ $v'=0.5302$
 CCT=2710K (Duv=0.0021) Dominant WL:Ld =583.5nm Purity=64.0%
 Ratio:R=25.2% G=72.4% B=2.3%; Peak WL:Lp=608.2nm FWHM=112.9nm
 Render Index:Ra=83.5 CRI=78.7 TM30:Rf=83 Rg=93
 R1 =82 R2 =93 R3 =95 R4 =82 R5 =83 R6 =93 R7 =82
 R8 =58 R9 =9 R10=84 R11=82 R12=75 R13=85 R14=98 R15=74

Photo Parameters:

Flux = 1869 lm Eff. : 128.69 lm/W Fe = 5.678 W Scotopic:2306.2 S/P:1.2341

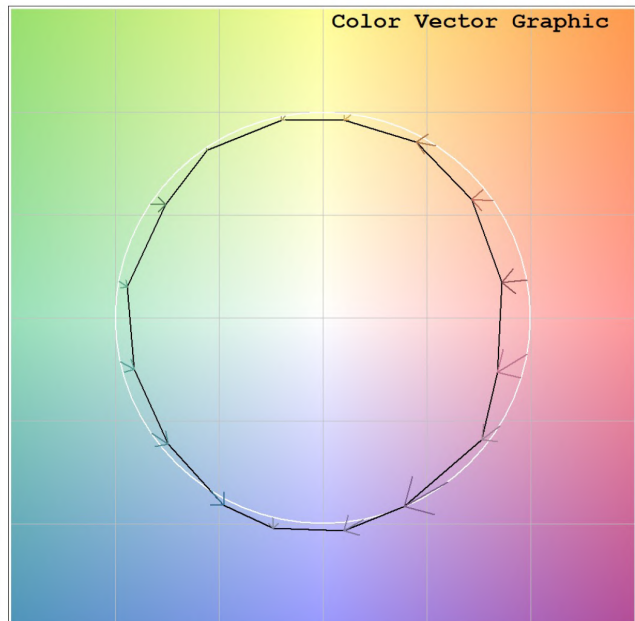
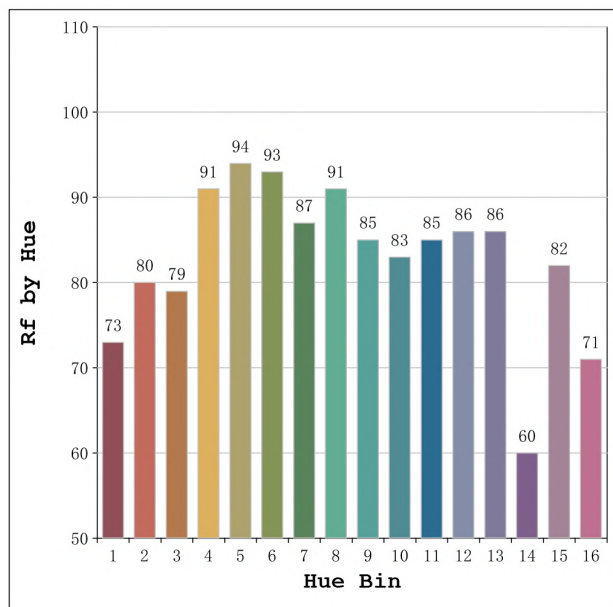
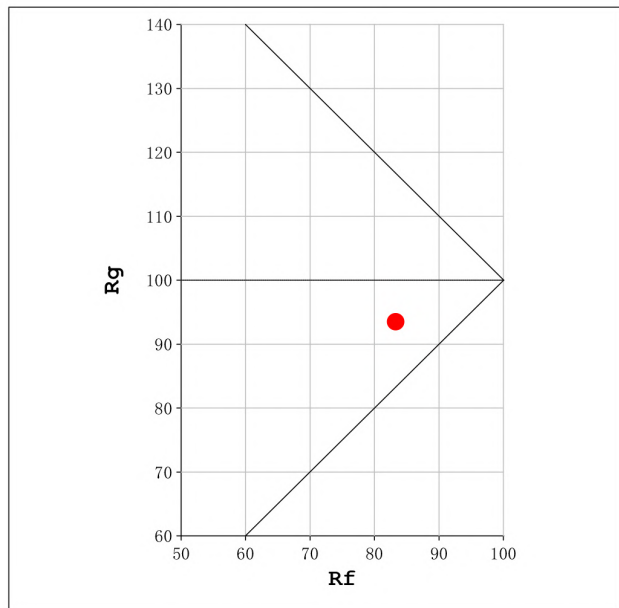
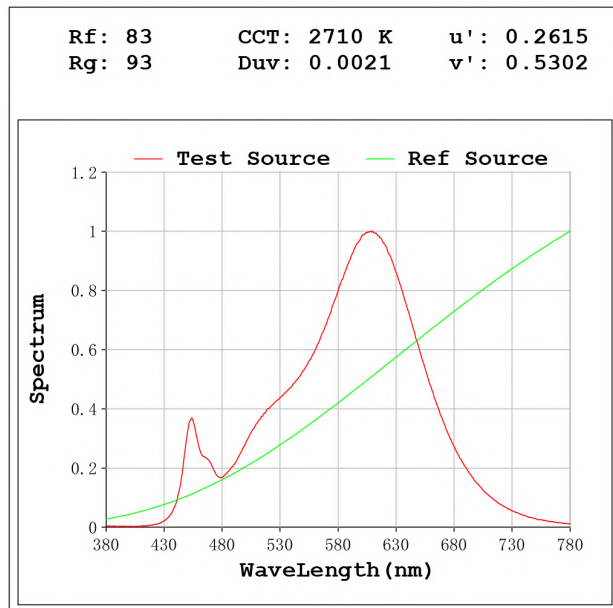
Electrical parameters:

V = 23.998 V I = 0.6051 A P = 14.52 W PF = 1.000

Status: Integral T = 423 ms Ip = 34976 (53%)

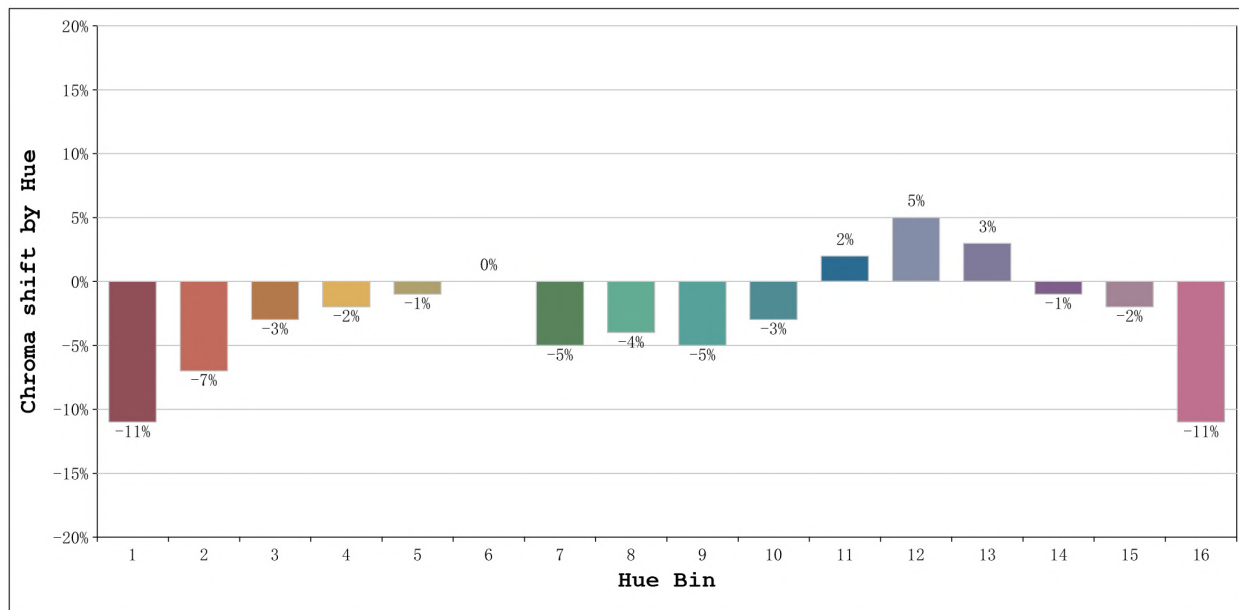
Model:Ecoled Elite 15 2700K
 Tester:Sergio Carneros
 Temperature:27Deg
 Manufacturer:Luz Negra S.L

Number: 31.014
 Date:2024-02-16 12:42:53
 Humidity:40%
 Remarks:100cm de tira flexible



Model:Ecoled Elite 15 2700K
 Tester:Sergio Carneros
 Temperature:27Deg
 Manufacturer:Luz Negra S.L

Number: 31.014
 Date:2024-02-16 12:42:53
 Humidity:40%
 Remarks:100cm de tira flexible



			Graphic shift(%)	
Hue Bin	Hue Angle	Rf	Chroma	Hue
1	0.0° - 22.5°	73	-11	1
2	22.5° - 45.0°	80	-7	6
3	45.0° - 67.5°	79	-3	9
4	67.5° - 90.0°	91	-2	3
5	90.0° - 112.5°	94	-1	2
6	112.5° - 135.0°	93	0	0
7	135.0° - 157.5°	87	-5	-3
8	157.5° - 180.0°	91	-4	2
9	180.0° - 202.5°	85	-5	5
10	202.5° - 225.0°	83	-3	9
11	225.0° - 247.5°	85	2	9
12	247.5° - 270.0°	86	5	1
13	270.0° - 292.5°	86	3	-10
14	292.5° - 315.0°	60	-1	-23
15	315.0° - 337.5°	82	-2	-10
16	337.5° - 360.0°	71	-11	-10

Model:Ecoled Elite 15 2700K
 Tester:Sergio Carneros
 Temperature:27Deg
 Manufacturer:Luz Negra S.L

Number: 31.014
 Date:2024-02-16 12:42:53
 Humidity:40%
 Remarks:100cm de tira flexible